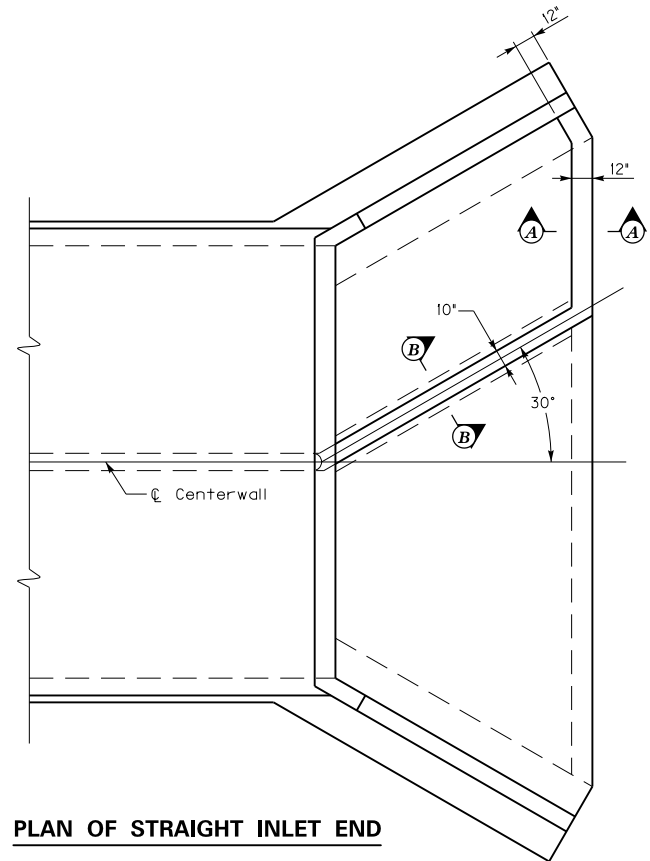
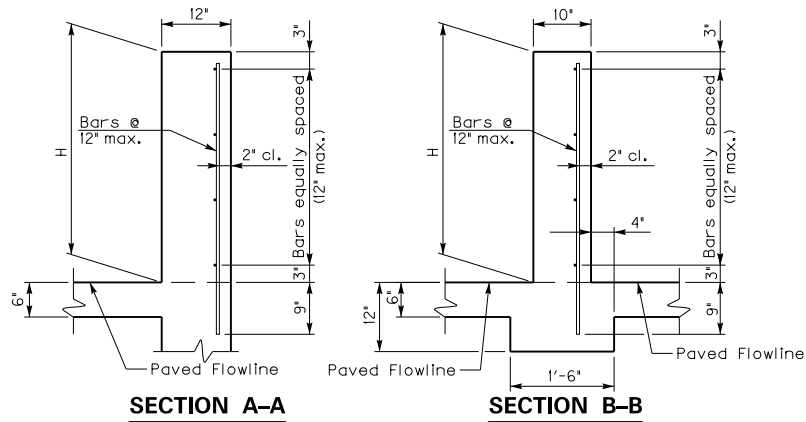


**PLAN OF SKEWED INLET END**



**PLAN OF STRAIGHT INLET END**



**SECTION A-A**

**SECTION B-B**

### General Notes

**LOW FLOW DIVERSION CURB:** Include all materials and labor required to construct the Low Flow Diversion Curb in the bid for Low Flow Diversion Curb.

**DIMENSION 'H':** This dimension is the lesser of the wing tip elevation, one-half the barrel height opening, or as designated on the plans.

**METHOD OF MEASUREMENT:** The limits of the Low Flow Diversion Curb is the entire wall that is above the paved flowline, extending from the centerwall to the wing face as detailed on the Plan views, and the 6" x 1'-6" footing as shown in Section B-B.

**STEEL REINFORCEMENT:** All steel reinforcement is #4 bars in accordance with ASTM A 615, Grade 60.

**CONCRETE:** Class "A" Concrete is to be used.

<b>KENTUCKY DEPARTMENT OF HIGHWAYS</b>		
<b>LOW FLOW DIVERSION CURB</b>		
STANDARD DRAWING NO. BGX-016-01		
SUBMITTED	<i>[Signature]</i> DIRECTOR, DIVISION OF BRIDGE DESIGN	12-01-99 DATE
APPROVED	<i>[Signature]</i> STATE HIGHWAY ENGINEER	12-01-99 DATE